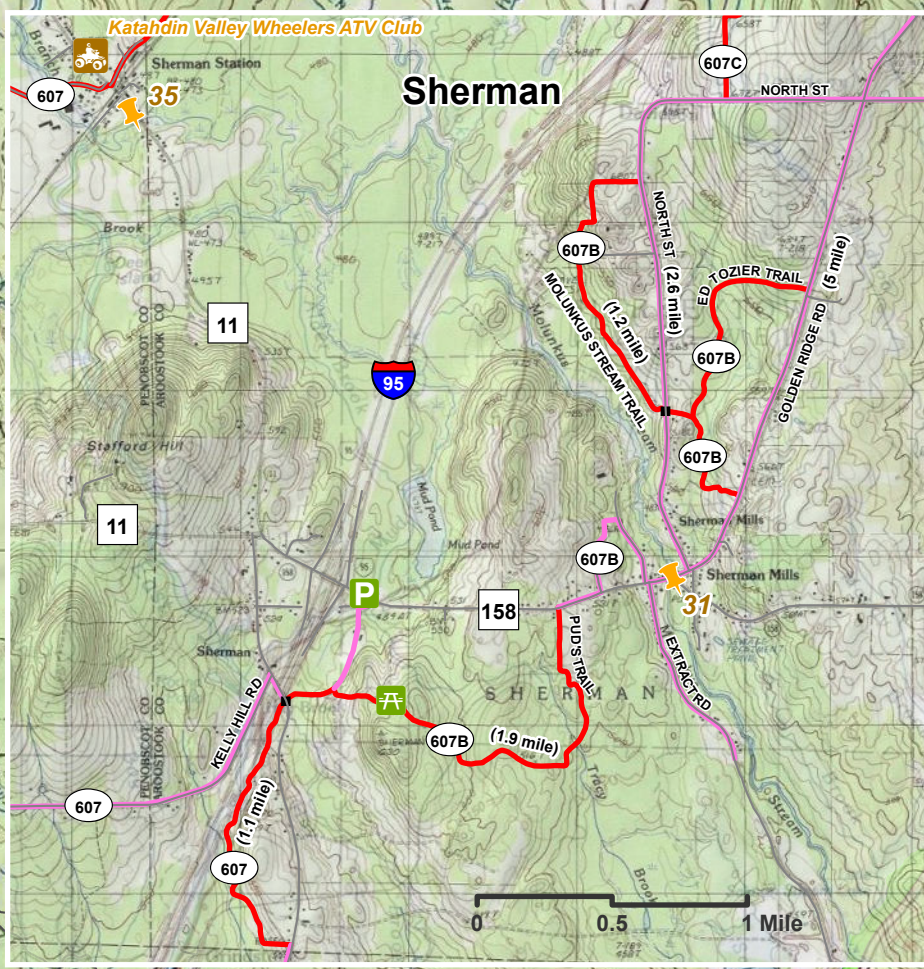
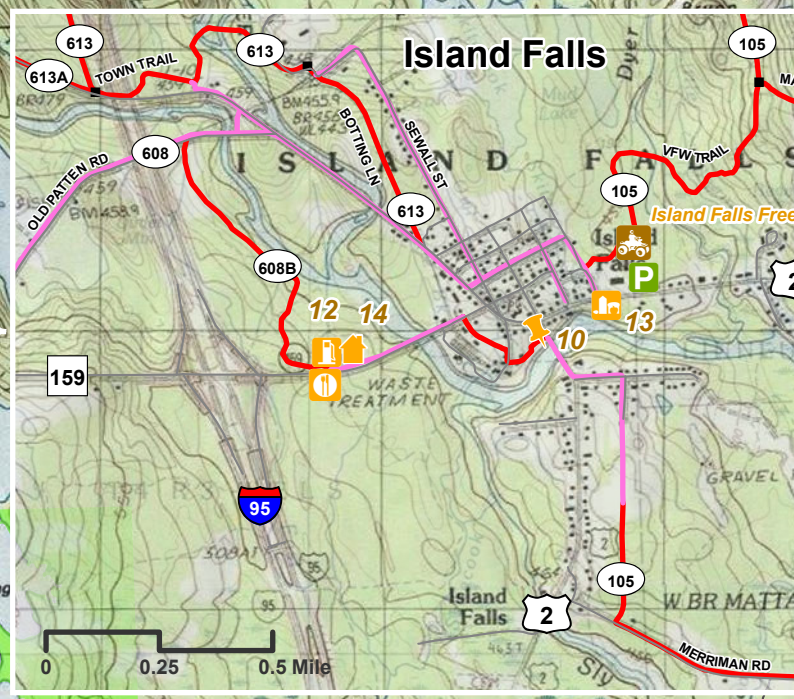
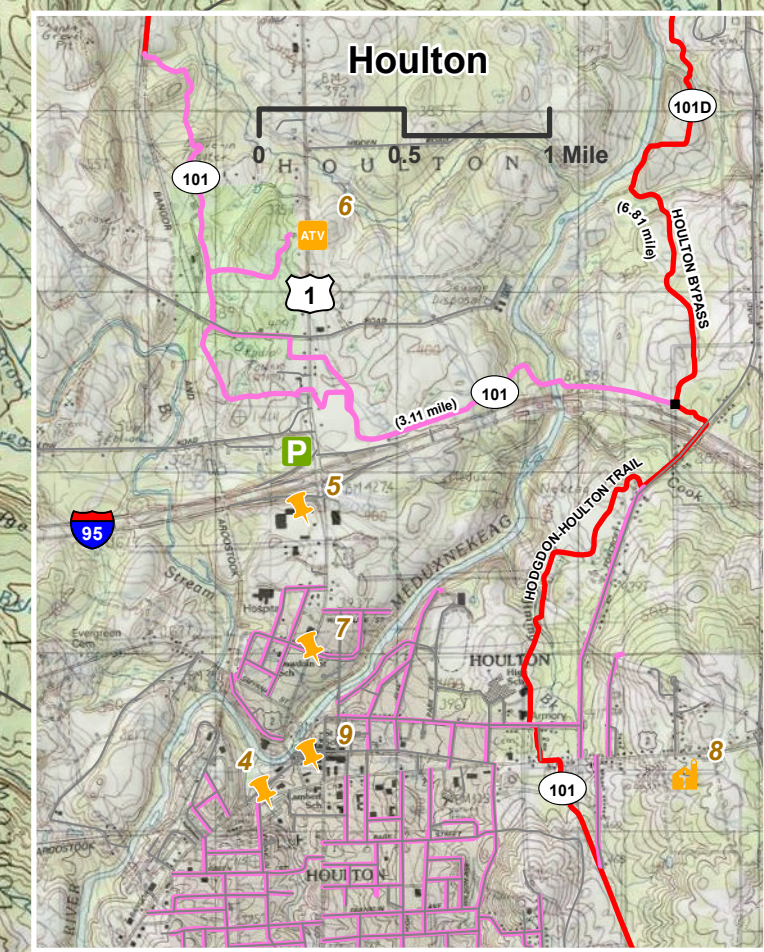
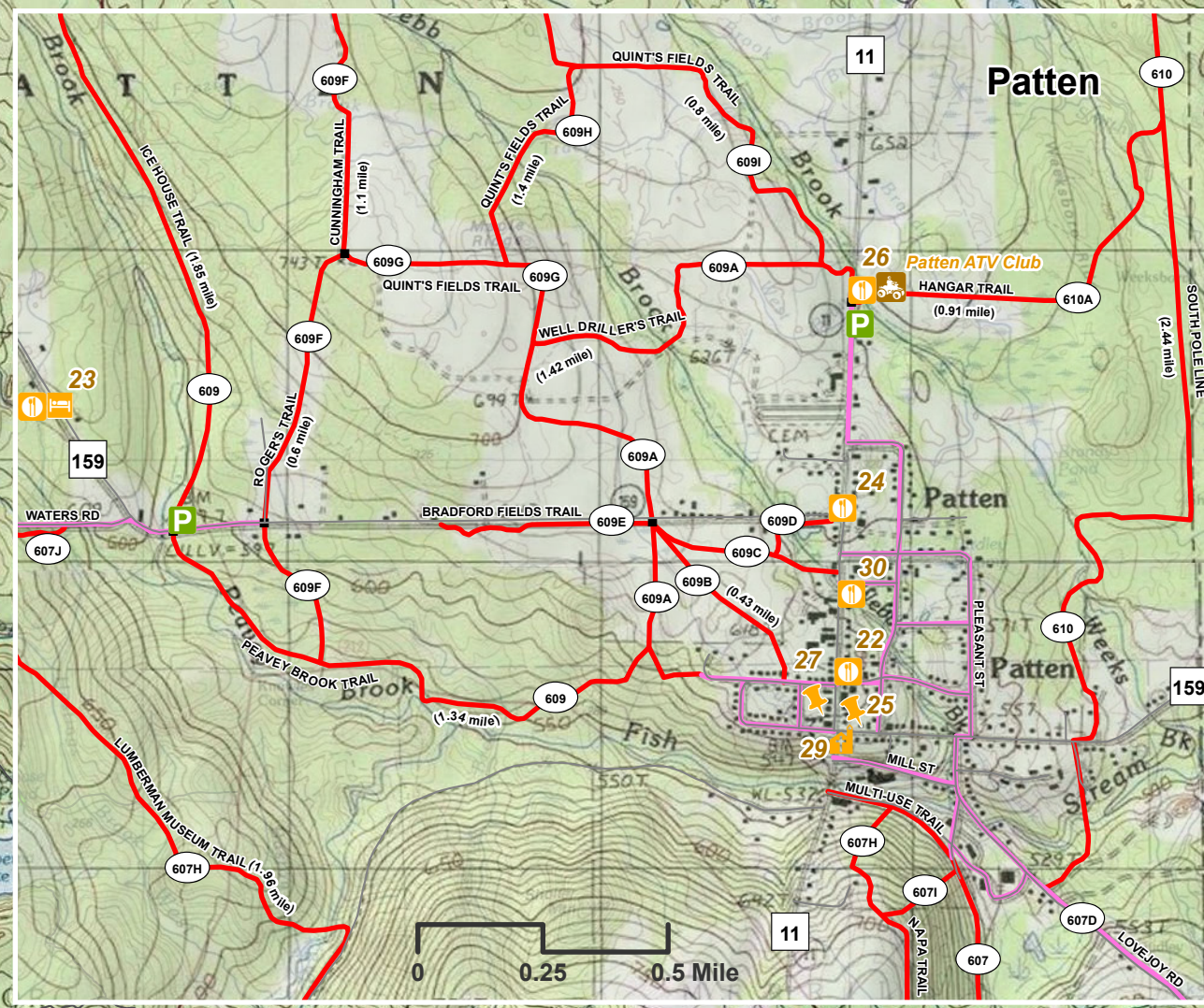
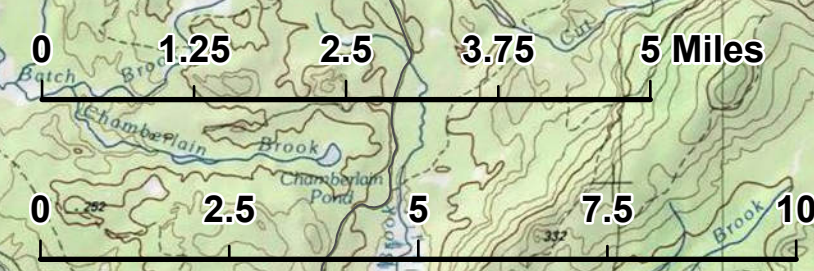


Southern Aroostook ATV Trail Map

2023-2024 (Third Edition)



Haynesville Woods Trail Riders Club
Katahdin Valley Wheelers ATV Club



Disclaimer, Warning, and Copy Right:
Respect land and landowners. Stay on the marked trails. Observe all ATV laws and carry out any and all litter. Users of this map shall hold all ATV clubs posted on this map, the University of Maine at Presque Isle GIS Laboratory, map publisher, advertisers, property owners, and any parties who contributed to this publication harmless for any physical injury or property damage incurred through the use of the trails. Said parties accept absolutely no responsibilities as to whether trails are open or the condition of the trails. Since trails may change frequently for many reasons, or may be shown inaccurately on the map, this guide is not intended for navigation but for general information. Please contact local ATV clubs for more detailed information about the trails. The brochure may not be reproduced in whole or in part without written permission of Knowles Corner ATV Club of Oakfield, Maine.

Disclaimer by Irving Woodlands:
Annual landowner's permits are granted to the following clubs. In order to utilize trails within Irving Woodlands properties, individuals must: (1) be an active member of one of the listed clubs; (2) display a current year club sticker on ATV; (3) display a current year ATV Maine sticker on ATV; and (4) stay on designated trails only.

- Allagash ATV Club
- Aroostook Riders ATV Club
- Aroostook Valley ATV Club
- Big 13 ATV Club
- Bonnieville ATV Club
- Caribou ATV Club
- Eagle Lake ATV Trail Blazers
- Frenchville ATV Riders Club
- Grand Isle ATV Club
- Island Falls Free Wheelers ATV Club
- Katahdin Valley Wheelers ATV Club
- Knowles Corner ATV Club
- Medawaska ATV Club
- Misards ATV Club
- Northern Ridge Runners
- Patten ATV Club
- Portage Lakers ATV Club
- Shin Pond Trail Riders Club
- Sinclair ATV Club
- Sly Brook Trail Blazers
- St Agatha ATV Club
- Star City ATV Club
- Van Buren ATV Club
- Valley ATV Riders Club

Important Maine ATV laws:
"A properly registered ATV may be operated on a public way only the distance necessary, but in no case to exceed 1500 feet, on the extreme right of the traveled way for the purpose of crossing, as directly as possible, a public way, bridge, overpass, underpass, sidewalk or culvert as long as that operation can be made safely and does not interfere with traffic approaching from either direction on the public way." "Except for the land on which the operator is domiciled, a person under 10 years of age may not operate an ATV. A child 10-15 years old can operate an ATV if they have successfully completed an ATV training course and is accompanied by an adult." "The statewide width limit for ATVs & UTVs is 65 inches and the weight limit is 2,000 lbs. Always stay to the right when riding along designated ATV access routes." Visit <https://www.maine.gov/itw/snowmobile/atv-laws-rules.html> for a complete list of Maine's ATV laws and rules.

The map was initially made in 2019 and updated in 2023, at the University of Maine at Presque Isle GIS Laboratory, by Dr. Chunzeng Wang with assistance of Chuck Loucka of Knowles Corner ATV Club and Real Deschaine of ATV Maine, as well as Lewis & Paula Conrad, Dennis Brackett, Bill Malone, Warren Sutter Jr., Blaine King, Mike Beals, Douglas Smart, and Heidi Carter.
Map projection: UTM, NAD 1983.
Basemap data source: USGS, Maine GeoLibrary, ArcGIS Online.

Please consider donating to a local ATV club to help maintain the Maine ATV trail system. Thank you for your support!

- Club Locations
- ATV Service
- ATV Service/Rentals
- Churches
- Eating Sponsors
- Gas Sponsors
- Groceries
- Lodging Sponsors
- Other Sponsors
- Real Estate
- Border Crossing
- Campground
- Lean-to
- Park & Ride
- Picnic/Rest Area
- Trailhead
- LandMarkOR/lookout
- 607 ATV Trail & MATS
- Access/Connector Trail
- Public Conserved Land